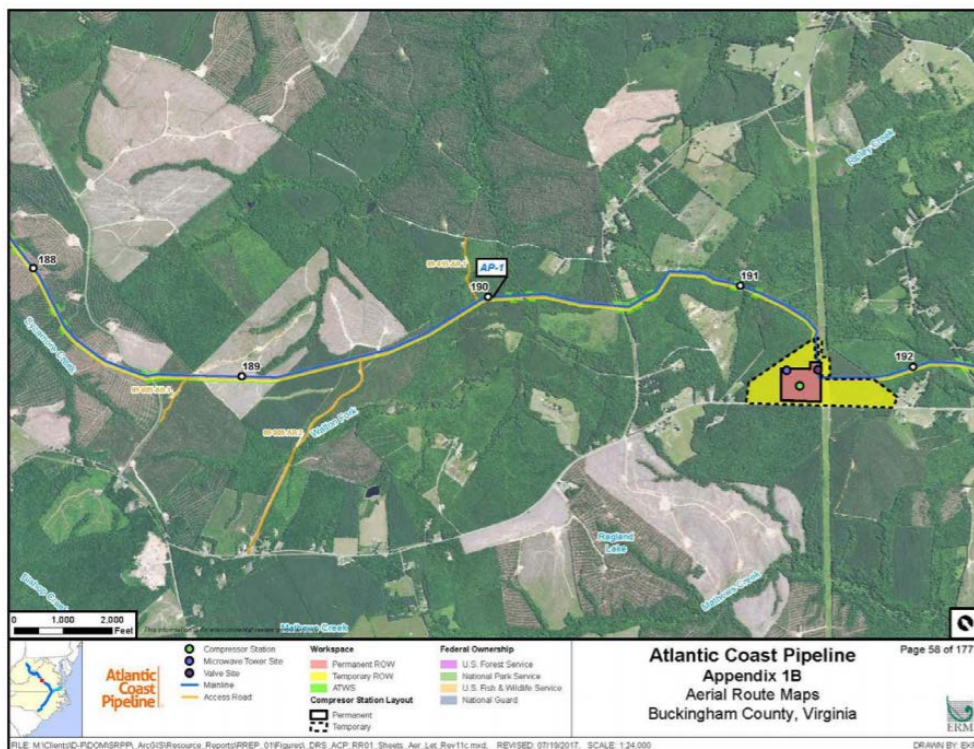
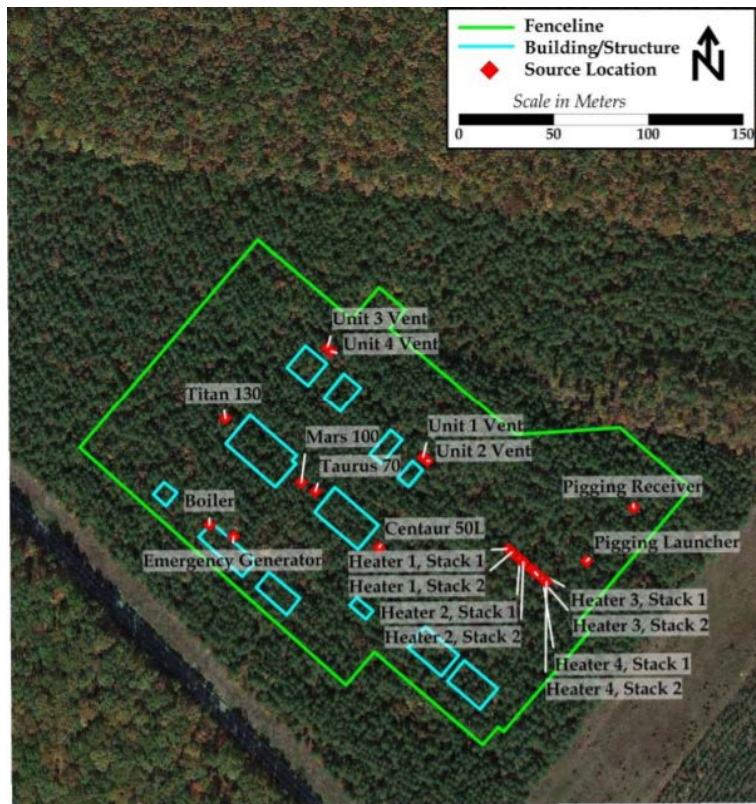


**Images and Tables from the New Permit Application for ACP CS#2
and related Air Model Report
(Woods Corner/Union Hill/Buckingham)
July 17, 2018**



SUMMARY OF TOTAL POTENTIAL EMISSIONS

Project Emissions	Annual Emissions (tpy)					
	NO _x	CO	VOC	PM	SO ₂	CO ₂ e
Application Update (2017)	46.1	86.4	32.1	43.3	7.26	317,637
Proposed Update (2018)	34.3	51.6	7.69	43.2	8.30	295,686

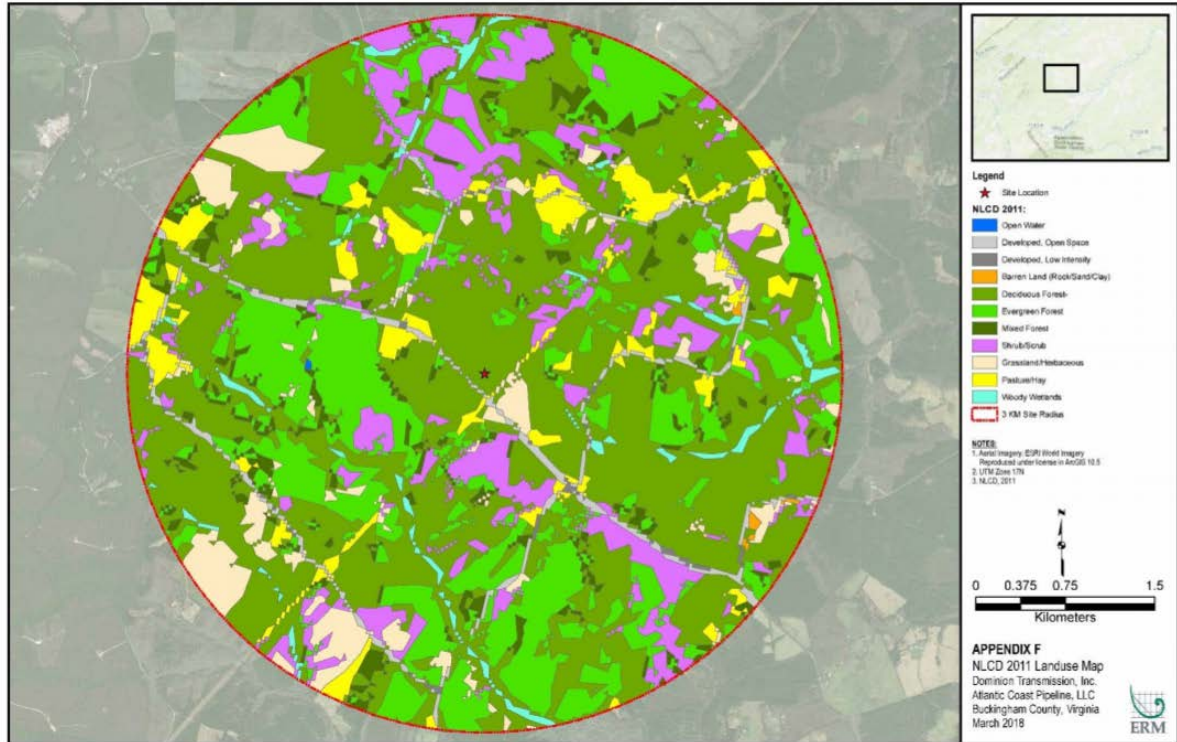
Air Toxics Model Results

Pollutant	Averaging Period	Scenario	Significant Concentration (µg/m ³)	Model Result (µg/m ³)
Formaldehyde	1-hour	50% Load	62.5	38.9
		75% Load		38.9
		100% Load		38.9
		Startup (blended with 50% load)		40.5
		Shutdown (blended with 50% load)		40.2
	Annual	50% Load	2.4	0.081
		75% Load		0.079
		100% Load		0.076
Hexane	1-hour	Pigging (Launching)	8,800	6,277
		Pigging (Receiving)		6,897
		Purging from Startup Events		1,370
		Blowdown from Shutdown Events		4,518
		Normal Operations		20

TABLE 3.9 FACILITY-WIDE POTENTIAL EMISSIONS (TPY)

Unit ID	Criteria Pollutants							Greenhouse Gases						Total HAPs
	NO _x	CO	VOC	SO ₂	PM _{Filt}	PM _{10-Filt}	PM _{2.5-Filt}	PM _{Cond}	CO ₂	CH ₄	N ₂ O	CO ₂ e	NH ₃	
CT-01	8.67	9.54	1.05	2.12	3.58	3.58	3.58	8.87	74,103	6.05	1.88	74,813	8.12	1.11
CT-02	5.72	5.85	0.687	1.40	2.37	2.37	2.37	5.86	48,911	3.96	1.24	49,381	5.77	0.900
CT-03	10.5	13.0	1.28	2.57	4.35	4.35	4.35	10.8	89,784	7.48	2.27	90,649	10.2	1.32
CT-04	3.68	4.77	0.444	0.898	1.52	1.52	1.52	3.76	31,455	2.54	0.796	31,755	3.58	0.476
WH-01	1.37	2.30	0.151	0.091	0.052	0.052	0.052	0.156	3,290	0.063	0.060	3,309	0	0.052
LH-01	0.929	3.44	0.501	0.304	0.112	0.112	0.112	0.335	10,935	0.210	0.200	11,000	0	0.172
LH-02	0.929	3.44	0.501	0.304	0.112	0.112	0.112	0.335	10,935	0.210	0.200	11,000	0	0.172
LH-03	0.929	3.44	0.501	0.304	0.112	0.112	0.112	0.335	10,935	0.210	0.200	11,000	0	0.172
LH-04	0.929	3.44	0.501	0.304	0.112	0.112	0.112	0.335	10,935	0.210	0.200	11,000	0	0.172
EG-01	0.599	2.40	0.599	0.012	0.144	0.144	0.144	0.037	531	4.80	0	651	0	0.657
FUG-01	-	-	0.421	-	-	-	-	-	0.433	14.3	-	357	-	0.026
FUG-02	-	-	0.910	-	-	-	-	-	0.936	30.9	-	772	-	0.056
TK-1	-	-	2.52E-05	-	-	-	-	-	-	-	-	-	-	2.52E-05
TK-2	-	-	0.146	-	-	-	-	-	0.009	0.017	-	0.439	-	0.010
Total	34.3	51.6	7.69	8.30	12.5	12.5	12.5	30.8	291,812	70.9	7.05	295,686	27.7	5.30

This land use image (below) erases human populations.



The following table shows woody wetlands in a three kilometer radius.

ACP - Buckingham Site, Virginia			
NLCD 2011 (3KM Radius)			
Grid Code	Grid Code Description	Acres	% Total
11	Open water	1.01	0.01 %
21	Developed, Open Space	169.12	2.42 %
22	Developed, Low Intensity	24.41	0.35 %
31	Barren Land	6.73	0.10 %
41	Deciduous Forest	3410.61	48.84 %
42	Evergreen Forest	1497.83	21.45 %
43	Mixed Forest	293.76	4.21 %
52	Shrub/Scrub	709.44	10.16 %
71	Grassland/Herbaceous	417.15	5.97 %
81	Pasture/Hay	349.61	5.01 %
90	Woody Wetlands	103.84	1.49 %
TOTAL		6983.50	100.00 %

*UTM Zone 17 N

Look at in the modeling tests. Who lives in this cleared area in the lines?

